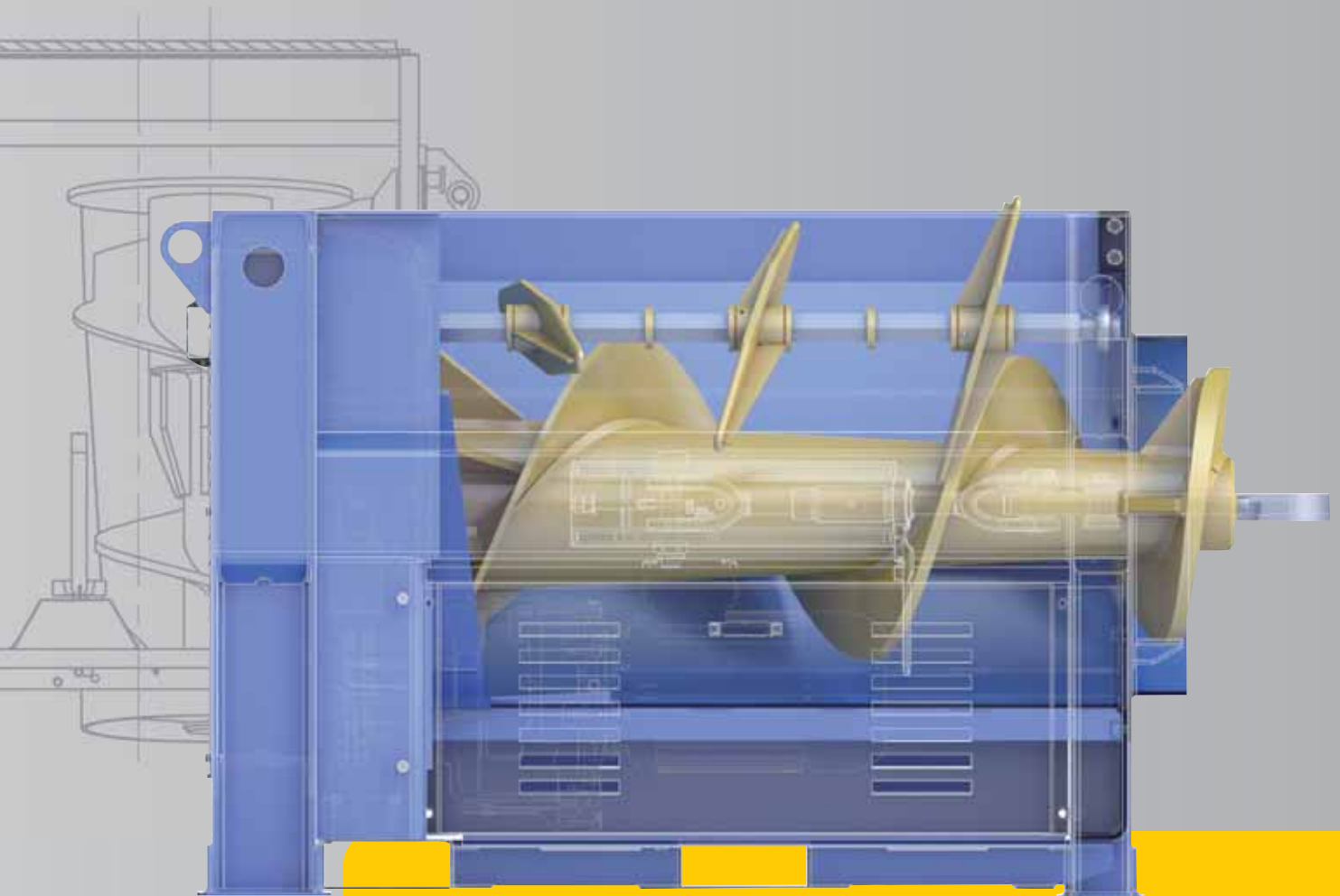


SV 11.AT
SV 15.AT
SV 18.AT
SV.22.AT
MSV11.AT

Serie AT Advanced Technologie



Auger
compactor

www.werner-weber.com

Extreme compaction

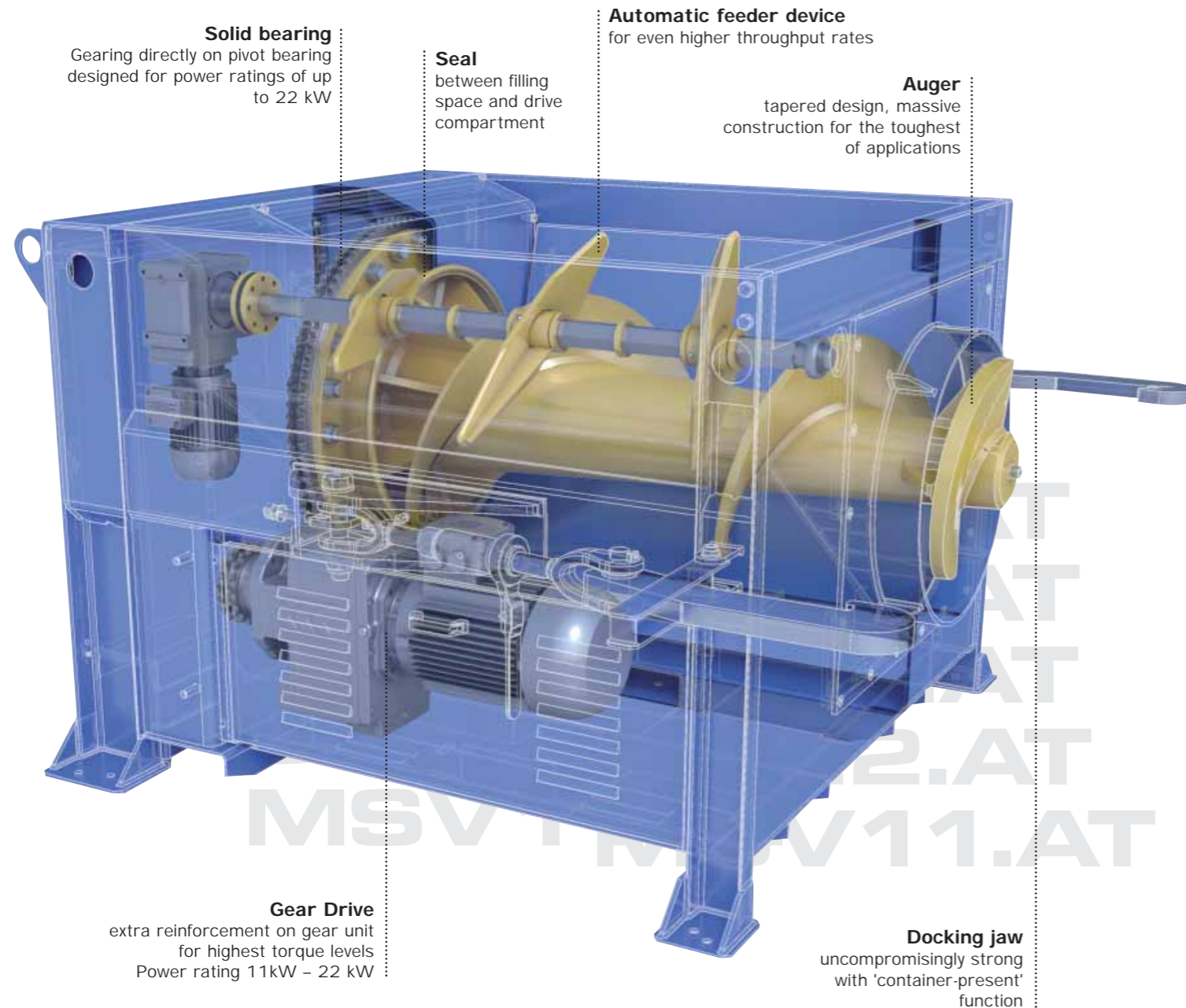
Your advantages

Reduce costs – benefit from the maximum volume reduction for your waste and valuable materials, also cutting your disposal costs.

Operator-friendly – The procedure for operating the machine is clear and simple, making the work of your personnel easy as well as safe.

Big loading aperture 1450 x 1450mm – this JUMBO aperture clearly distinguishes Werner & Weber auger compactors from all competitors on its market.

Uncompromisingly powerful – we are the only manufacturer to offer power ratings of 7.5/11/15/18 and 22 kW.



Solid bearing

Gearing directly on pivot bearing designed for power ratings of up to 22 kW

Seal

between filling space and drive compartment

Automatic feeder device

for even higher throughput rates

Auger

tapered design, massive construction for the toughest of applications

Gear Drive

extra reinforcement on gear unit for highest torque levels
Power rating 11kW – 22 kW

Docking jaw

uncompromisingly strong with 'container-present' function

Auger compactor

- If you want to compact waste efficiently and economically, Werner & Weber auger compactors are the right alternative for you. The innovative design of the auger shreds the material while still in the filler space. This achieves a great compaction result in the container. Auger compactors can be used to compress cardboard packaging, plastic sheeting, PET bottles, disposable plastic boxes, disposable pallets and disposable wooden crates. Depending on the kind of waste material, the auger compactor can be fitted with an automatic feed device. This equipment item is a cost option. It is adapted to the material in question, and guarantees problem-free pick-up of waste materials as well as high throughput levels.
- Werner & Weber auger compactors are compact and space-saving. The auger shaft is driven by gear motors with robust chain drive. These have been specifically manufactured for the ruggedly operating conditions encountered in auger compactors. The auger is mounted on a solid pivot bearing with integrated gearing. This combination assures great operational reliability and long service life. Together with a fully automatic central lubrication unit, this reduces the maintenance overhead of Werner & Weber auger compactors to a minimum. Control is performed by a programmable PLC-controller. The procedure for operating the machine is

clear and simple; relevant information such as the full indicator makes work both easy and safe.

- With an attached or stationary mounted container tipper, filling the auger compactor is made even easier. The material can be collected from different locations within the company, then directed to the auger compactor process with the help of containers on rollers. The automatic filler process makes work easier for your personnel and reduces costs and the time involved.

- We produce and supply our systems in a way that enables them to fit flexibly and seamlessly into your building infrastructure. The auger compactor can be filled from the ground on the left, right, and front, from a loading ramp, or through the wall of a building using a waste chute. The amount of available space and your requirements are what determine this choice.

- We supply receiver containers in many different sizes and variants. They can offer maximum volumes or reduced height, e.g. for units in underground car parks. If space considerations or operating procedures require it, we can supply container traversing systems, or container lifting carriages to drive containers out of the building.



- ① Filling from ground level
- ② Filling from a loading ramp
- ③ Filling through the wall of a building (chute)

Mobile auger compactors

With the mobile auger compactor, you further increase the flexibility available for your applications. On these machines, the press component and the container form a unit. No fixed installation is required for this machine. You simply place the machine where it is needed on your company premises. The additional cost of connection and installation is reduced to a minimum. Of course, you also benefit from the advantages of all Werner & Weber auger compactors when you use a mobile auger compactor. These reduce costs, protect the environment and offer your personnel an operator-friendly solution for waste disposal work. Our mobile auger compactors are supplied with power ratings ranging from 7,5 kW to 15.0 kW.



Technical data

Stationary auger compactor	SV7.AT	SV11.AT	SV15.AT	SV18.AT	SV22.AT
Drive power [KW]	7,5	11,0	15,0	18,5	22,0
Filler aperture [mm]	1450 x 1450				
Dimensions (L x W x H) (mm)	1900 x 2050 x 1300 (without hopper)				
Loading height [mm]	1300 (without hopper)				
Weight [kg]	2350	2350	2500	2600	2750
Electrical connection	400V, 50Hz 32/50/62A				

Mobile auger compactor	MSV16.AT	MSV18.AT	MSV20.AT	MSV22.AT	MSV25.AT
Drive power [KW]	11,0/15,0				
Container volume [m³]	16	18	20	22	25
Dimensions (L x W) [mm]	5800/2470	6100/2470	6400/2470	6700/2470	7300/2470
Height [mm]	2750				
Weight approx [kg]	4700	4900	5100	5300	5500
Loading height [mm]	1580 (without hopper)				
Electrical connection	400V, 50Hz 32/50/62A				

The details provided here may vary, depending on the equipment specification of the machine.

Compaction power

Material	Weight/m³ compacted	Filling weights Container 32m³
Cardboard packaging from dept. store	up to 320 kg/m³	up to 10.200 kg
Disposable wooden pallets/wooden crates	up to 200 kg/m³	up to 6.400 kg
Fruit crates	up to 170 kg/m³	up to 5.450 kg
Plastic sheeting	up to 220 kg/m³	up to 7.050 kg
PET bottles, not perforated	up to 170 kg/m³	up to 5.450 kg
PET bottles, perforated	up to 215 kg/m³	up to 6.900 kg
Sawdust	up to 235 kg/m³	up to 7.500 kg

These details are guide values and depend on the material, the filling, the type and the setting of the machine.

